

# TEXAS JOURNEY

by Gerry Booth

## Started From Howard County

Moses Shipman's family had settled near James Burleson in Missouri by late 1817. They had located a fourteen-acre piece of land on the east side of the Missouri River and built a log house. However, their plans to stay on their new homestead were interrupted by a land speculator named Berry. Taylor Berry was most probably the land speculator that Daniel wrote about. Taylor Berry was listed on many of the New Madrid earthquake claims. Moses and his family moved westward

Missouri land records are complicated. Original land grants began when Missouri was a territory under French and Spanish control. When the United States took control, settlers started buying land on a credit system. In addition to this, there were military grants and grants which were designed to compensate people for the property they lost from the New Madrid earthquakes. I used the Bureau of Land Management, <https://gloreCORDS.blm.gov/default.aspx> to locate the land records I found for Missouri. The maps on the individual records were helpful but I also entered the location information in the search engine on the website <https://www.randymajors.org/township-range-on-google-maps> that I first introduced in my article, "To Okaw." (All of the past Texas Journey articles are posted on my page of the website <http://burlesonsbigtent.com/sample-page/gerry-booth/>)

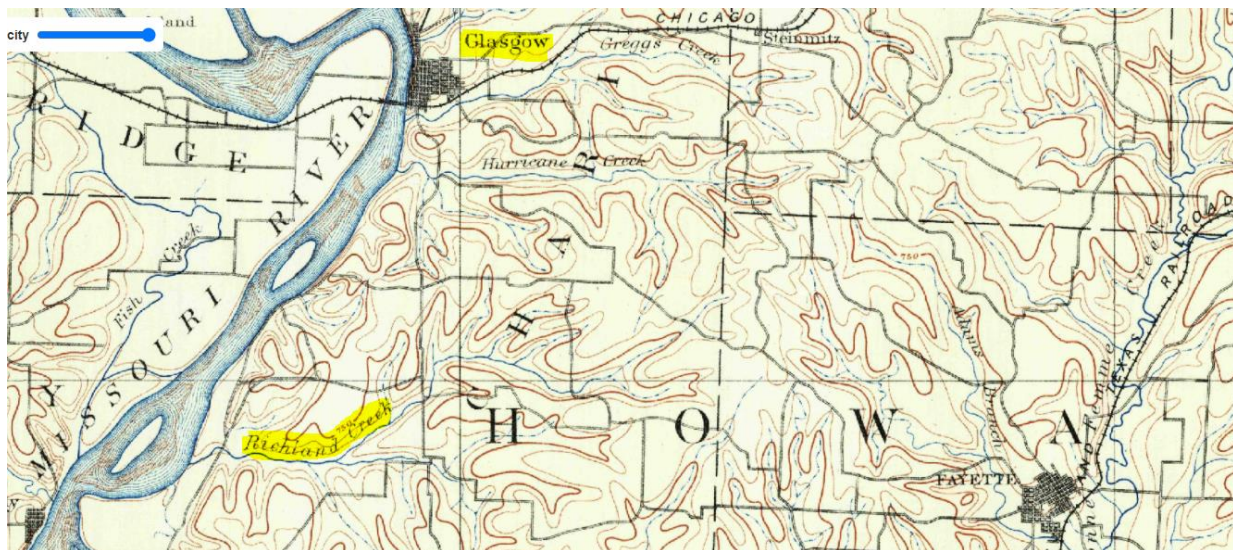
Moses Shipman was once again on the search for a large amount of cheap land like so many Americans who were farmers.

Continuing with Daniel's story:

## Chapter II.

*LEFT HOWARD COUNTY, 5<sup>TH</sup> OF JUNE, 1821 — CROSSED THE MISSOURI RIVER — WENT TO COLE COUNTY — STAYED TILL FALL — THEN TO TEXAS.*

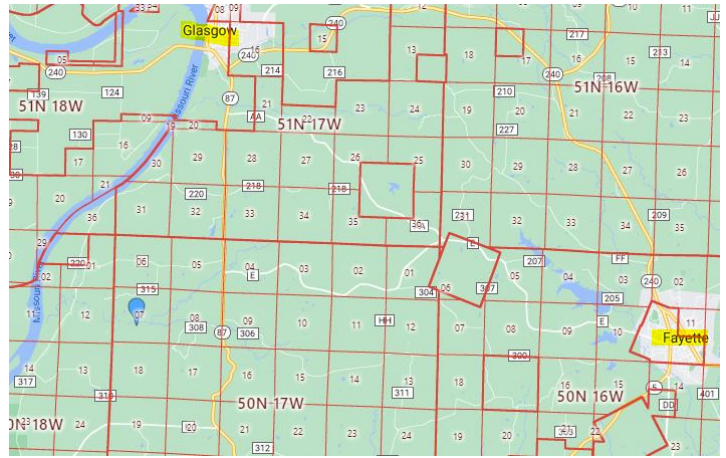
**We stayed on the Berry place until sometime in the year 1819, then Father entered a quarter section of land about twelve or fourteen miles from the river, on a creek called Richland.**



Richland Creek is a tributary of the Missouri River. An 1890 map shows the location of Richland Creek.<sup>1</sup>

<sup>1</sup> <https://pastmaps.com/map/glasgow-howard-county-mo-usgs-topo-1890>

Moses' property was in Township 50 North, Range 17W, 5<sup>th</sup> Principal Meridian, Section 7, in Missouri. It was somewhere on the faint blue line for Richland Creek, in the square where the blue pin is located. He owned 80 acres of the section. <sup>2</sup>



“In U.S. land surveying under the Public Land Survey System (PLSS), a section is an area nominally one square mile (2.6 square kilometers), containing 640 acres (260 hectares).”<sup>3</sup>

Another view of the area is this map provided in the Bureau of Land Management records. <sup>4</sup> The large orange square is the township and the small orange square inside is the section. Moses owned an eighth of the small square.

Names On Document		Miscellaneous Information	
<input type="checkbox"/>	COOPER, JOHN,	Land Office:	Franklin
<input type="checkbox"/>	SHIPMAN, MOSES	US Reservations:	No
		Mineral Reservations:	No
		Tribe:	---
		Militia:	---
		State In Favor Of:	---
		Authority:	April 24, 1820: Sale-Cash Entry (3 Stat. 566)
Military Rank:	---	General Remarks:	Patent Record Imperfect

Document Numbers		Survey Information	
Document Nr:	1765	Total Acres:	80.00
Misc. Doc. Nr:	---	Survey Date:	---
BLM Serial Nr:	---	Geographic Name:	---
Indian Allot. Nr:	---	Metes/Bounds:	No
Coal Entry. Nr:	---		

Land Descriptions							
Map	State	Meridian	Twp - Rng	Aliquots	Section	Survey #	County
<input checked="" type="checkbox"/>	MO	5th PM	050N - 017W	W½NE¼	7		Howard

**⚠** Due to data limitations, we could not map the aliquots or lots of this land description. The township and section are shown.

<sup>2</sup> <https://www.randymajors.org/township-range-on-google-maps?x=-92.8716162&y=39.1486296&cx=-92.8556517&cy=39.1513586&zoom=12&state=MO&t=50&td=N&r=17&rd=W&pm=05&labels=show&basemap=roadmap>

<sup>3</sup> [https://en.wikipedia.org/wiki/Section\\_\(United\\_States\\_land\\_surveying\)#:~:text=In%20U.S.%20land%20surveying%20under,township%20on%20a%20rectangular%20grid.](https://en.wikipedia.org/wiki/Section_(United_States_land_surveying)#:~:text=In%20U.S.%20land%20surveying%20under,township%20on%20a%20rectangular%20grid.)

<sup>4</sup> <https://glorerecords.blm.gov/details/patent/default.aspx?accession=0103-132&docClass=CV&sid=zoshimws.mj4>

JOHN QUINCY ADAMS, President of the United States of America,  
To all to whom these Presents shall come, Greeting:

1677  
KNOW YE, That Jesse Todd, Assignee of  
Moses Shipman  
having deposited in the General Land Office, a Certificate of the Register  
of the Land Office at Franklin in Missouri,  
whereby it appears that full payment has been made for the West  
half of the North East quarter of Section  
Eleven, in Township Fifty, of Range  
Seventeen, Containing Eighty acres

of the Lands directed to be sold at Franklin  
by the Act of Congress, providing for the sale of the Lands of the  
NEW STATES, in Missouri, there is granted, by the United  
States, unto the said Jesse Todd, and to his heirs, the  
half quarter lot or section of Land above described:  
We have and do hold the said half quarter lot or section of Land, with  
the Appurtenances, unto the said Jesse Todd, and to  
his

heirs and assigns forever.

In testimony whereof, I have caused these letters to be made PATENT, and  
the Seal of the GENERAL LAND OFFICE to be hereunto affixed.

GIVEN under my hand at the City of Washington, the tenth  
day of November in the year of our Lord one thousand eight  
hundred and twenty four and of the Independence of the  
United States of America the fiftieth

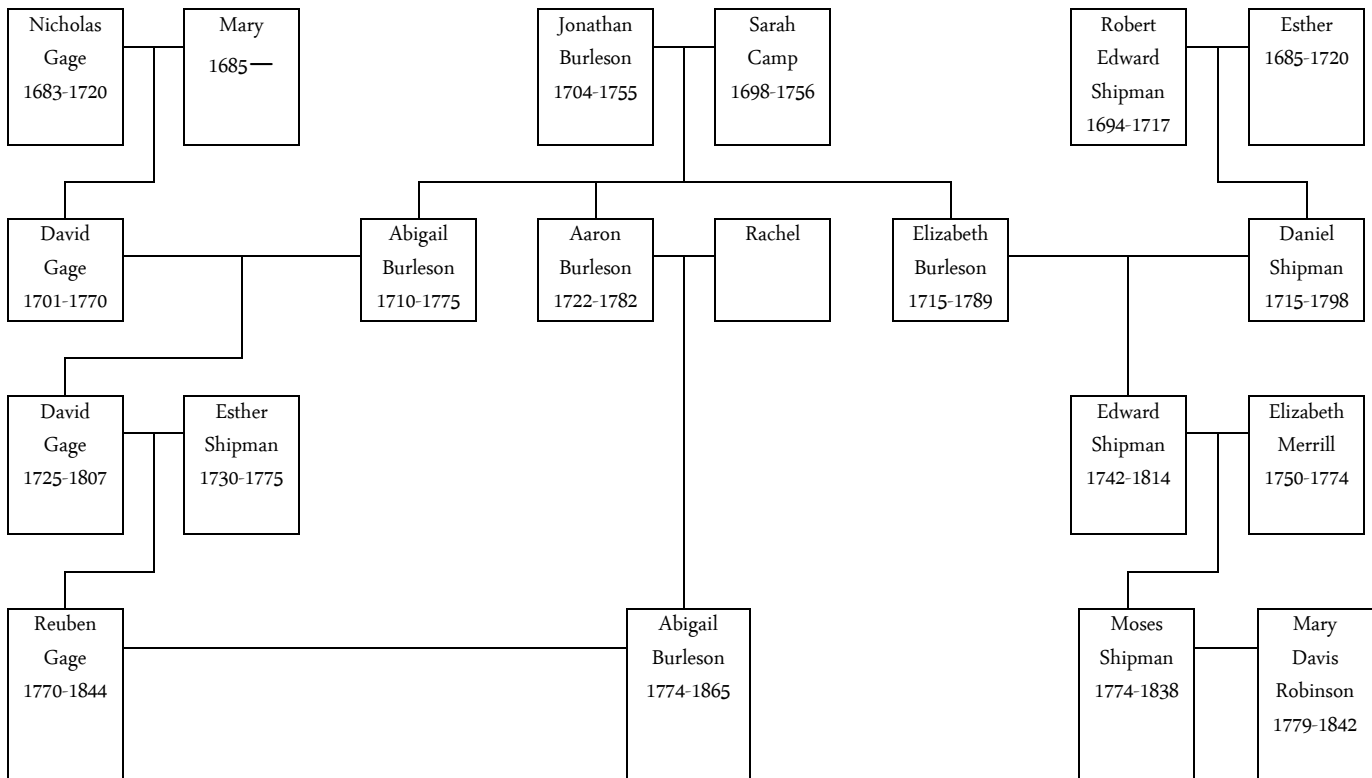
By the President,

Commissioner of the General Land Office.

**We moved to it and built a tolerably good house, and cleared, fenced and cultivated about twelve acres; made two crops on it, and got very well fixed. About this time, father and an old friend by the name of Reuben Gage took a notion to move to the state of Arkansas.**

Reuben Gage was not only a friend, he was Moses Shipman's second cousin. I have provided a chart showing the relationships between the Gages, Burlasons, and Shipmans that we are looking at in this article. You will notice that there is an Esther Shipman who is not anchored to the other Shipmans. This is because I do not know much about her. If you do, please email me at [gbooth806@gmail.com](mailto:gbooth806@gmail.com)

<sup>5</sup> <https://gloreCORDS.blm.gov/details/patent/default.aspx?accession=0103-037&docClass=CV&sid=zoshimws.mj4#patentDetailsTabIndex=1>



Howard County, M. T. }  
 Chariton Township. }

**T**AKEN UP by Moses Shipman, as a  
 stray, one BAY FILLY, supposed to  
 be two years old, 13 hands 3 inches high,  
 a small star and snip, and a white under  
 lip, and some white on both her fore feet;  
 no brands perceivable—and appraised to  
 \$25 by us this 6th March, 1820.

*Reuben Gage,  
 Joshua Potter,*  
 Appraisers.

Sworn to and subscribed before me this  
 day and date above written.

*David Woods, J. P.*

Howard County, ss.  
 Recorded on the 17th day of March  
 1820.

While the Shipmans were living in Howard County Missouri Mary gave birth to their ninth child, (eighth surviving child) a girl named Elizabeth born on February 3, 1819.

Also while in Missouri one of Moses' horses was stolen. He placed an ad<sup>6</sup> in the newspaper to try to recover her. The term "bay" refers to the color of hair in her coat. It means "a reddish-brown or brown body color" usually "with a black point coloration on the mane, tail, ear edges and lower legs."<sup>7</sup> The term "filly" refers to a young female horse.

In the advertisement, the two appraisers of the value of the horse were Reuben Gage and Joshua Potter. This is Reuben Gage, Moses' second cousin.

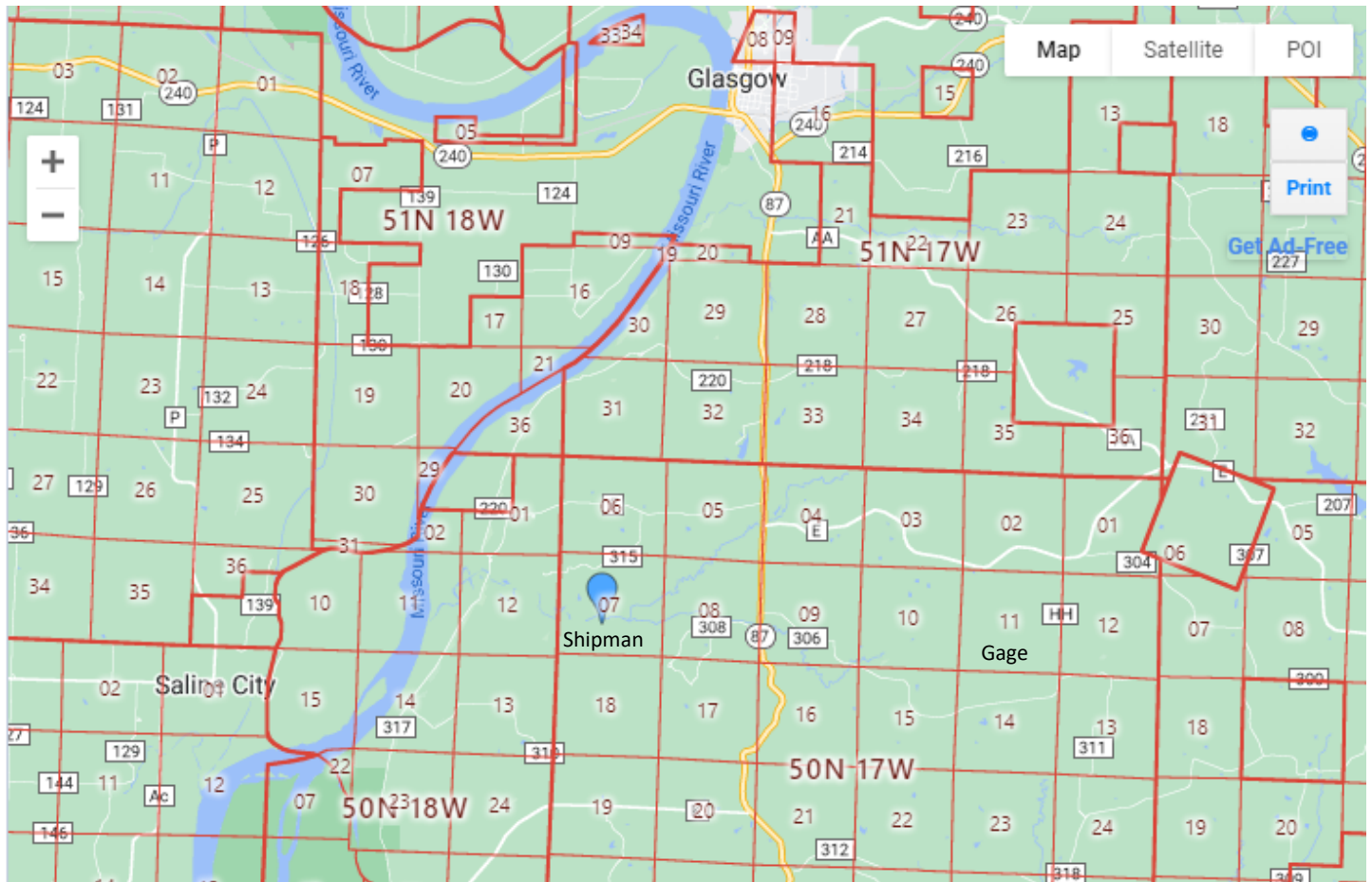
In fact, after searching the land records, and using randymajor.org, I was able to locate where Reuben lived in relationship to where Moses lived. Both were in Township 50

North, Range 17 West. Moses' property was in Section 7 and Rueben's in Section 11. Since a section is a square mile, Moses and Rueben lived about three to four miles apart.

<sup>6</sup> "Moses Shipman - bay filly strays" Newspapers.com. Columbia Herald-Statesman, May 27, 1820.  
<https://www.newspapers.com/article/columbia-herald-statesman-moses-shipman/100805738/>

<sup>7</sup> [https://en.wikipedia.org/wiki/Bay\\_\(horse\)](https://en.wikipedia.org/wiki/Bay_(horse))

This is a map I made:



Moses and Rueben were not the only restless families desiring more land at a good price and they were not the only ones willing to move west. By 1820, Moses Austin was 58 years old and had less than \$2,000 to his name. Austin had lost over \$200,000 in the lead mining and banking businesses, so to regain his wealth he devised a plan to form a colony in the Mexican country, known as Texas.

**They sold out, and on the 5<sup>th</sup> of June, 1821, they started from Howard county, Missouri; about 25 miles we crossed the Missouri river at Boonville, Cooper county, went down the river into Cole county. On the way it commenced raining, and we had a wet spell. Father broke a wagon wheel, he and old cousin Reuben Gage managed to have it mended, so that we got down to a large creek called Moro; by this time the weather had become very warm and horse-flies so very numerous, that it was almost impossible to travel, and the old folks held a family caucus, and decided to stop until fall, which we did; and spent the balance of the summer there. While there we made the acquaintance of an old gentleman by the name of Harrell, he and his son Joel had been to see a part of the Arkansas country and was well pleased with what little they saw of it.**



8

About this time we began to hear something said about Red and Sabine rivers, and the Mexican country. That appeared to take fine with father, and I felt as much interested as any of them, and this reminded me of what I had heard my father say to mother and others, when we lived in South Carolina, when I was a little boy; that he had been reading, or heard some person or persons talking about the Red and Sabine rivers, and on the other side of those rivers belonged to the Spaniards, and was called the Spanish country; that they proposed to give to any good American citizen that will come well recommended and settle in the country – the head of a family 640; his wife 320, and each child 160 acres of land. It did not appear to take so well with our friend Gage. Father said it appeared to him like he never could procure enough land to keep his children from being tenants without going to Texas.

<sup>8</sup> Thomas G. Bradford, *Missouri* 1838, [https://www.davidrumsey.com/luna/servlet/detail/RUMSEY~8~1~2346~220036:Missouri-?sort=pub\\_list\\_no\\_initialsort%2Cpub\\_list\\_no\\_initialsort%2Cpub\\_date%2Cpub\\_date&qvq=q:missouri;sort:pub\\_list\\_no\\_initialsort%2Cpub\\_list\\_no\\_initialsort%2Cpub\\_date%2Cpub\\_date;lc:RUMSEY~8~1&mi=118&trs=1605](https://www.davidrumsey.com/luna/servlet/detail/RUMSEY~8~1~2346~220036:Missouri-?sort=pub_list_no_initialsort%2Cpub_list_no_initialsort%2Cpub_date%2Cpub_date&qvq=q:missouri;sort:pub_list_no_initialsort%2Cpub_list_no_initialsort%2Cpub_date%2Cpub_date;lc:RUMSEY~8~1&mi=118&trs=1605)